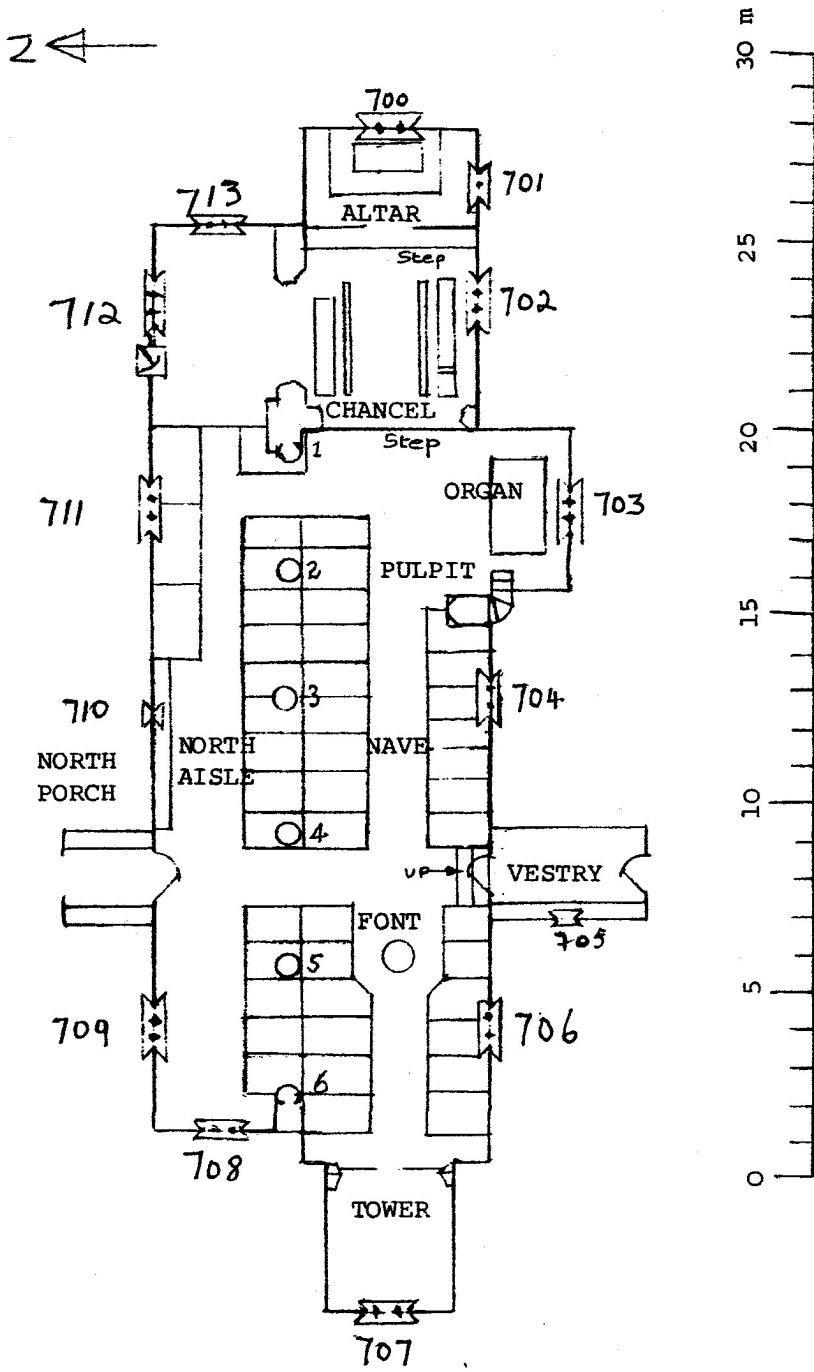


ST. MARY THE VIRGIN, NETTLETON, WILTS.

ST. MARY, NETTLETON

WINDOWS



Note: Circular columns numbered 1-6

**ST MARY THE VIRGIN,
NETTLETON, WILTSHIRE**

WINDOWS

The condition of items in this Section appears to be satisfactory unless otherwise stated.

700 EAST WINDOW of 3 LIGHTS & 7 tracery lights Ph CHANCEL E end

1 Stonework:

Perpendicular style tracery beneath a two-centred arch and rere arch with splayed reveals and flat sill. Three cinquefoil headed main lights.

Main Lights (8-10)

Ascension

(8) In the head of the light is an angel with multi-coloured wings and light coloured clothing, looking towards Christ. Below are five disciples, all nimbed, looking upwards towards Christ.

(9) In the head of the light are two red-winged cherubs' heads on either side of the ascending Christ. Christ has a cruciform nimbus, white and yellow robes and he has his arms raised. Below him looking up are his mother, St Mary, and a disciple.

(10) In the head of the light is an angel similar to the one in light (8). Below are five disciples, all nimbed looking upwards towards Christ.

The maker's signature is at the bottom right hand corner.

Across the bottom of all three lights is a frieze of turrets and battlements with flowers and leaves between the arches. Underneath at the very bottom across all three lights is an inscription in Roman caps:

TO * THE * GLORY * OF * GOD | THE * FATHER * SON * AND | HOLY *
GHOST * AMEN

- | | |
|-----|-------------------------------------|
| 2 | Stained and painted glass, and lead |
| 3 | 1885/90 (ref a) |
| 4 | - |
| 5-6 | ER Suffling |
| 7-9 | - |
| 10 | a) Robert Eberhard |

701 WINDOW of 2 LIGHTS & 4 tracery lights CHANCEL S

Stonework:

Square headed , two light window, separated by a stone mullion. Each light is cinquefoil headed with four small shaped lights above. Splayed reveals and sill.

Tracery

Coloured glass

Main Lights (5 & 6)

Both lights have a brightly coloured border with a white fillet edge. The main part of each light is filled with stamped quarries which have a yellow motif on plain glass.

ST. MARY THE VIRGIN, NETTLETON, WILTS.



700



701

ST MARY THE VIRGIN,
NETTLETON, WILTSHIRE

WINDOWS

702 WINDOW OF 3 LIGHTS & 6 tracery lights Ph CHANCEL S

- 1 **Stonework:** Square headed opening with three cinquefoil headed lights and glazed tracery above. Stone mullions and steeply splayed reveals and sill.

Tracery Lights (1-6)
Coloured glass

Main Lights (7-9)

Adoration of the Magi

(7) Two shepherds, one standing and one kneeling. The standing one holds a crook and wears a hooded garment over a red belted tunic. Behind him is the head of an ass. The kneeling shepherd is bearded and holds a staff. He has a red cloak over light-coloured garments. In front of him on the ground are a hat and a horn.

(8) The Virgin Mary with long hair kneels, looking down at the Christ Child. She wears a red robe with white capped sleeves and a bronze and cream cloak. Behind her is the head of an ox.

(9) St Joseph stands, holding a lantern and staff. He has a red nimbus and wears a light-coloured collared garment and a dark cloak.

Across lights (8) & (9) in the background is a stable roof, with starry sky above and one larger star above the Virgin. Below the roof there are groups of lilies.

Across the bottom of all lights is a memorial inscription in caps with the underlined letters in yellow, the rest are white on black (see 9 below). The maker's signature is at the bottom right of light (9) at the end of the inscription.

- 2 Stained and painted glass, and lead
3 1887 (ref. a)
4 -
5-6 Signed: E R Suffling / Del & Pinxit / Edgware Rd / London
7-8 -
9

IN MEMORY OF LAURA | AND OF HER SEVEN | SISTERS, DAUGHTERS
OF / F W & M M WOODMAN | ERECTED IN 50TH YEAR | OF QUEEN
VICTORIA

- 10 a) Wiltshire Times & Trowbridge Advertiser 17.9.1887

ST. MARY THE VIRGIN, NETTLETON, WILTS.



702



702

**ST MARY THE VIRGIN,
NETTLETON, WILTSHIRE**

WINDOWS

703 WINDOW OF 3 LIGHTS & 12 tracery lights Ph **ORGAN BAY**
Hidden by organ

1 **Stonework:** Perpendicular style tracery beneath a two centred arch. Three cinquefoil headed main lights.

Tracery Lights (1-12)

(1-4) Each with an angel holding a shield showing a coat of arms:

(1) Azure, a bend Or [SCROPE]

(2) Gules, 3 swords in pile, points downwards Argent, hilted & handled Or [PAULET]

NB according to Burke it should be Sable not Gules.

(3) Argent, a fret Sable [Unknown]

(4) Argent a fess between 2 bars-gemel Gules [BADLESMERE]

Main Lights (13-15)

Three Maries at tomb, St George and angels

(13) There is an angel with right hand raised. On a scroll are the words: He is risen He is not here, in Gothic letters, black on white.

Below the three Maries at the empty tomb.

(14) St George looks up at an angel above him who has left hand raised. On a scroll, there is text, most of which is illegible except EXCELSIOR

(15) Two standing angels look down on three kneeling men. On a scroll below the men is an illegible text.

Across all three lights is a memorial inscription in caps and l/c (see 9 below)

2 Stained and painted glass, and lead

3 19th C

4 -

5 Charles Edmund Clutterbuck (ref. a)

7 JR Domvile died 1854 aged 35.

8 -

9

John Russell Domvile Captain | Royal Artillery obiit Trinidad |
May 1st MDCCCLIV aetet XXXV

10 a) Alan Brooks (stylistic attribution)

ST. MARY THE VIRGIN, NETTLETON, WILTS.



703

502

ST MARY THE VIRGIN,
NETTLETON, WILTSHIRE

WINDOWS

- 704 WINDOW OF 3 LIGHTS & 6 tracery lights Ph NAVE S**
- 1 **Stonework:** Square headed opening with three cinquefoil headed main lights with glazed tracery above. Steeply splayed reveals.
- Tracery Lights (1-6)**
Coloured glass
- Main Lights (7-9)**
- (7 & 9) Clear rectangular panes
- (8) **St Peter**
Under a Gothic canopy of crocketed pinnacles stands St Peter. He is nimbed and holds a pair of keys in his right and an open book in his left hand and crooked arm. He wears dark red and green robes.. At the bottom of the light on a scroll is S · PETER in Gothic caps.
At the bottom right is the maker's signature.
- 2 Stained, painted and clear glass, and lead
3 1890s (ref. a)
4 -
5-6 E R Suffling / 426 Edgware Rd / London
7-9 -
10 a) Robert Eberhard
- 705 WINDOW OF 1 LIGHT VESTRY**
- Clear glass
- 706 WINDOW OF 3 LIGHTS & 6 tracery lights Ph NAVE S**
- 1 **Stonework:** as 704
- Tracery Lights (1-6)**
Green leaves & purple grapes on red ground.
- Main Lights (7-9)**
Suffer little children
(7) One bearded saint and a group of 1 bearded man wearing a hood, 2 standing women, one holding a child and one kneeling woman and a small girl.
(8) Christ with cruciform nimbus and in red, green and white robes, is seated above 2 children and a kneeling mother and baby.

ST. MARY THE VIRGIN, NETTLETON, WILTS.



704



704

ER Suffling
426829-are Rd
- LONDON -

ST. MARY THE VIRGIN, NETTLETON, WILTS.



706



706

**ST MARY THE VIRGIN,
NETTLETON, WILTSHIRE**

WINDOWS

(9) A kneeling saint and a group of 2 men, one woman and a child, all standing. The maker's signature is at the bottom right.

Across the bottom of all 3 lights is a memorial inscription in caps (see 9 below)

2	Stained and painted glass, and lead
3	1890
4	-
5-6	E R SUFFLING/ FECIT & DELT / LONDON W / 1890
7-8	-
9	IN LOVING MEMORY OF GERTRUDE LILIAN AND MAUDE GWENDOLINE WOODMAN
10	-

707 WINDOW OF 4 LIGHTS & tracery lights Ph WEST

1 **Stonework:** Perpendicular style pointed arch; four trefoil headed lights above which are 6 trefoil headed lights and a number of tiny lights.

Tracery Lights

Central four lights each have an angel holding a shield showing a symbol of the Passion.

Main Lights (10-13)

Crucifixions

Background of dark sky and sunset with rays from above over the 3 crosses.

(10)

Four soldiers, three kneeling, one of whom is gambling with soldier in light 11. There is a horse behind.

(11)

A cross with one of the thieves who wears loose tunic and red scarf-like cloth. Below the cross is a kneeling soldier gambling with soldier in light 10.

(12)

A cross with Corpus Christi. Above Christ's head is the titulus, INRI. Christ wears a loin cloth and looks down to his right. Below are 3 figures; Mary the mother of Christ, a figure which could be St John and a bearded male figure.

ST. MARY THE VIRGIN, NETTLETON, WILTS.



707

**ST MARY THE VIRGIN,
NETTLETON, WILTSHIRE**

WINDOWS

(13)

A cross with one of the thieves who wears a loose tunic. Below are four figures, 3 men and a kneeling woman who could be St Mary Magdalene.

Across the bottom of all 4 lights is a memorial inscription in Roman style caps (see 9 below).

- 2 Stained and painted glass, and lead
- 3 1892 (ref. a)
- 4 -
- 5-6 E R Suffling, signed (ref. a)
- 7 See Memorials No. 005
- 8 -
- 9

TO THE | GLORY OF GOD | AND IN LOVING | MEMORY OF /
REVEREND FT | WOODMAN WHO | ENTERED INTO REST |
NOV 19TH 1891

- 10 a) Robert Eberhard

708 WINDOW OF 3 LIGHTS & 9 tracery lights

NORTH AISLE W

Stonework:

Pointed Gothic style arch with a deeply splayed recess. Three cinquefoil headed lights and four dagger lights above.

Tracery Lights

Decorative coloured glass – Symbols of the Evangelists

Main Lights

Clear quarries

Date: c 1850 (ref. Robert Eberhard)

709 WINDOW OF 3 LIGHTS & 6 tracery lights Ph

NORTH AISLE

Stonework: Square headed recess with three trefoil headed lights. Reversed trefoil openings above. Deeply splayed reveals.

Tracery Lights

1-4 vine leaf decoration

5-6 Triangles of coloured glass

ST. MARY THE VIRGIN, NETTLETON, WILTS.



708



709

ST. MARY THE VIRGIN, NETTLETON, WILTS.



709

Centre

Left



Right



**ST MARY THE VIRGIN,
NETTLETON, WILTSHIRE**

WINDOWS

Main Lights

(7-9)

3 reset older shields, the rest clear quarries

7) 2 angels holding scrolls with Latin text

8) Date 1854 above a floral motif

9) 2 figures, each holding a coat of arms:

(a) Azure, a bend Or [SCROPE]

(b) Sable, semée of crosses crosslet Or and a lion rampant Argent [LONG of Draycott]

Date of tracery & resetting 1854 (ref. Eberhard)

710 WINDOW OF 1 LIGHT Ph

NORTH AISLE

- 1 **Stonework:** Narrow lancet; pointed arch, one cinquefoil headed light, deeply splayed reveals and sill.

Christ kneeling in the Garden of Gethsemane

Decorative border and floral motif in the head of the light.

The kneeling Christ with cruciform nimbus wears a red robe, green & white lower garments. He has long hair. In the background are 3 sleeping figures, trees, sky and a crescent moon.

The bottom section of the window is a clear rectangle and coloured border. Below this are the words Pray for These.

Signed by the maker on the right just below Christ.

- 2 Stained and painted glass, and lead
3 1890 (ref. a)
4 -
5-6 E R Suffling & Co / London
7-9 -
10 a) Robert Eberhard

711 WINDOW OF 3 LIGHTS & 4 tracery lights

NORTH AISLE

Stonework: as 709

Tracery Lights (1-4)

(1) Crowned V on a red background and foliage

(2) Shield set decorative glass. The Royal Arms after 1837 on the shield

ST. MARY THE VIRGIN, NETTLETON, WILTS.



710

ST. MARY THE VIRGIN, NETTLETON, WILTS.



711



**ST MARY THE VIRGIN,
NETTLETON, WILTSHIRE**

WINDOWS

- (3) Shield set in foliage pattern. The quartered arms are:
(i) Azure a bend Or [SCROPE]
(ii) Sable, 3 swords in pile, points downwards Argent, hilted and handled Or [PAULET]
(iii) Argent, a fret Sable [Unknown]
(iv) Argent a fess between 2 bars-gemel Gules [BADLESMERE]
(4) Crowned R on blue background and foliage

(5-7)
Clear rectangular panes with coloured leaf shape inserted into 5 & 7 but not 6.

712 WINDOW OF 3 LIGHTS & 6 tracery lights NORTH CHAPEL N

Stonework: Square headed opening with three cinquefoil headed lights. Six triangular eyelets. Deeply splayed reveals and flat sill.

Tracery Lights (1-6)
Triangles of coloured glass

Main Lights (7-9)
(7) Blue and orange border with outer white fillet. Clear quarries.

(8) Border as (7). Clear quarries with inset shield: Argent, on a chief Gules 3 bezants Or [Unknown]

(9) Border as (7). Clear quarries with inset shield: Azure, a lion rampant Argent.

713 WINDOW OF 3 LIGHTS & 3 tracery lights Ph NORTH CHAPEL E

- 1 **Stonework:** Pointed Gothic style arch; three trefoil headed lights with three quatrefoils above. Deeply splayed reveals and sill.

Tracery Lights (1-3)
Three quatrefoils:
(1) a yellow cross formed of 4 fleur de lys
(2) Star of David on red ground in centre with green foliage in foils
(3) central red roundel with IHS with green foliage in foils

Main Lights (4-6)
Martha, Virgin Mary, Mary Magdalene
Ornate canopy work in the top third of all the lights. The three figures stand on pillared pedestals.-
(4) The nimbed figure of St Martha who wears a white & yellow classical robe with blue wrap. She holds a jug in her left hand.

**ST MARY THE VIRGIN,
NETTLETON, WILTSHIRE**

WINDOWS

On the right base of the pedestal is the maker's signature.

(5) The nimbed figure of St Mary wears red and blue robes and has her hands together in prayer. There is a potted lily plant behind Mary to her right.

(6) The nimbed figure of St Mary Magdalene who wears red, blue, white & gold robes. She has a chaplet of flowers round her head and holds an ointment jar in her hands.

There is a memorial inscription across the bottom of all 3 lights (see 9 below).

- 2 Stained and painted glass, and lead
- 3 1887 (ref. a)
- 4 -
- 5-6 SUFFLING & C^o / EDGWARE R^D / LONDON
- 7-8 -
- 9

TO THE GLORY OF | GOD & IN MEMORY | OF MARY
MATILDA/ OBIIT 1874 THE | DEAR WIFE OF F T |
WOODMAN RECTOR

- 10 a) Wiltshire Times & Trowbridge Advertiser 17.8.1887